

## Status of Construction of each Building with Photographs :-

### Block – 1

#### A. SLAB CASTING:

- i. 1<sup>st</sup> Floor to 12<sup>th</sup> Floor Slab casting completed & Roof slab work in progress.



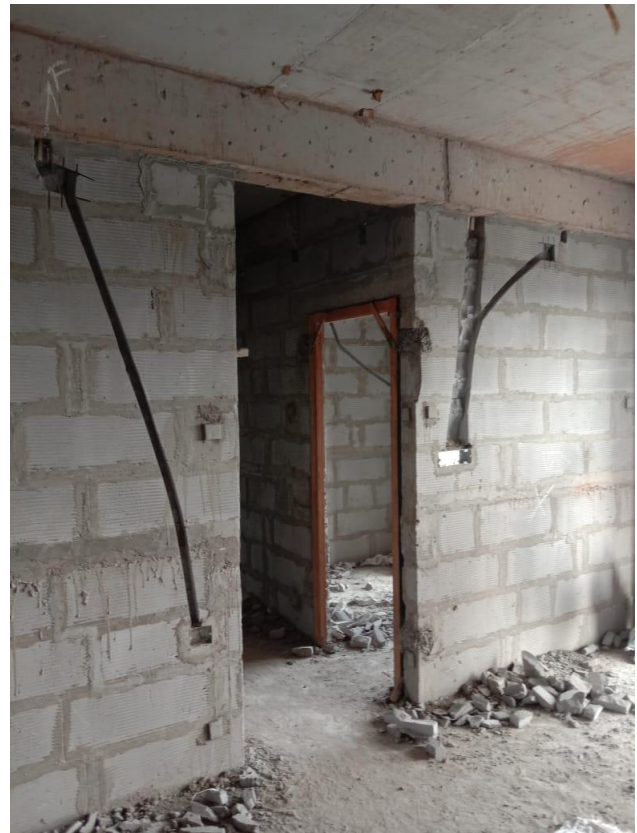
**B. BRICK WORK:**

- i. 1<sup>st</sup> Floor to 9<sup>th</sup> floor completed & 10<sup>th</sup> Floor work in progress.



### C. ELECTRICAL CONDUITE LAYING AND BOX FIXING.

I. 1<sup>ST</sup> Floor to 9<sup>th</sup> floor completed.



**D. INTERNAL PLASTER.**

I. 1<sup>ST</sup> Floor to 8<sup>th</sup> Floor completed & 9<sup>th</sup> Floor work in progress.

